

**EBA Prayer Focus: Halstead Baptist Church**

The town of Halstead is located in the Braintree District of Essex. Due to new housing developments, the town is growing and expanding rapidly and this presents new opportunities for the fellowship. The minister at Halstead Baptist Church, Revd Sean Carter, arrived in 2014. He is supported by two Deacons and an assistant. A great joy for the fellowship at Halstead was, shortly after lockdown ended, the church celebrated a baptism.

**Please pray**

- That those fearful of change may find peace in the process
- That the fellowship may discern God's leading for the future
- For the house purchased, that it may bring hope to those in need
- For more labourers! Particularly for a new Treasurer and Deacons

**Walton Parish Nursing**

- Please continue to pray for Lorna, John and the volunteers, trustees and management team.
- Pray for the forthcoming Celebration Service on 17<sup>th</sup> October where the speaker will be Rev Nick Swanson.

**BMS**

- Pray for those Christians who have been rejected by their families simply because they follow Jesus
- Give thanks to those who are planting churches in many parts of the world where to do so faces opposition.
- Pray for isolated Christians who find it difficult to follow Jesus without the support of others
- Pray for BMS supported workers who are helping support persecuted believers
- Pray that God will continue to help persecuted believers share their faith with others.

**This and That**

- Pray for Steve today as he speaks about OM at Ranelagh Road.
- Pray for Town Pastors as they restart patrolling in the next few weeks that plans will run smoothly.

**MRBC**

- Give thanks that the ceiling and windows are being fixed.
- Pray for those in the fellowship who are unwell at present.



Church Contacts			
<b>Pastor</b>	Mark Reid	01394 822173	<a href="mailto:pastor@mrbcfelixstowe.org.uk">pastor@mrbcfelixstowe.org.uk</a>
<b>Church Secretary</b>	Corinne Stockdale		<a href="mailto:secretary@mrbcfelixstowe.org.uk">secretary@mrbcfelixstowe.org.uk</a>
<b>Weekly Prayer Update</b>	Steve Lineham		<a href="mailto:prayer@mrbcfelixstowe.org.uk">prayer@mrbcfelixstowe.org.uk</a>
<b>Weekly Sheet</b>	Lisa Ransom		<a href="mailto:notices@mrbcfelixstowe.org.uk">notices@mrbcfelixstowe.org.uk</a>

**Welcome to Maidstone Road Baptist Church**

**Sunday 26<sup>th</sup> September 2021**  
**The Harvest Thanksgiving 2021**

Leader: *Mark Reid*  
 A live service in church @ MRBC

This week	
<b>Sunday 26<sup>th</sup> September</b>	10.30am <b>The Harvest Thanksgiving</b> - Live at Maidstone Road Speaker - <i>Mark Reid</i>
<b>Monday 27<sup>th</sup> September</b>	
<b>Tuesday 28<sup>th</sup> September</b>	
<b>Wednesday 29<sup>th</sup> September</b>	10.00am and 11.30am <b>Chair-Based Exercise</b> - MRBC
<b>Thursday 30<sup>th</sup> September</b>	9.30am <b>Felixstowe Morning Group</b> (9 Treetops)
<b>Friday 1<sup>st</sup> Oct</b>	10.30am <b>World Womens' Day of Prayer 2021</b> In the garden of <b>Kirton Methodist Chapel</b>
<b>Saturday 2<sup>nd</sup> October</b>	
<b>Sunday 3<sup>rd</sup> October</b>	10.30am <b>Communion Service</b> - Live at Maidstone Road Speaker: <i>Mark Reid</i>



Today we stand with those who suffer persecution, yet continue to reap God's spiritual harvest in many parts of the world. Service material has been produced by BMS World Mission.

**Got a notice for the Sheet?**

**Fellowship prayer** requests go to **Steve** by **Friday morning**  
**Notices** for the weekly sheet to **Lisa R** by Friday evening.

**Church Website:**  
**[mrbcfelixstowe.org.uk](http://mrbcfelixstowe.org.uk)**

## UPCOMING EVENTS

### Regular Activities

Because of the constraints placed on us by the Coronavirus pandemic, the only Church activities running at present are those listed in the Weekly Sheet

#### Forward Notice.

The next Church Meeting will be on Tuesday 16<sup>th</sup> November at the Church, 7.30pm.

#### Walton Parish Nursing Celebration Service

Sunday 17<sup>th</sup> October  
@ Seaton Road Methodist Church  
3.00pm

Speaker - Revd. Nick Swanson

Refreshments available after the service

#### Avril Mayhew

There will be a Memorial Service for Avril on Saturday 16<sup>th</sup> October, 2-30pm at the Church.

#### September Birthdays

20<sup>th</sup> Jayden S, 24<sup>th</sup> Sandra S, 25<sup>th</sup> David B.

#### October Birthdays

7<sup>th</sup> Ned R, 17<sup>th</sup> Pam L, Corrinne S, 20<sup>th</sup> Sandra C and Rhiannon Reid

#### Walton Parish Nursing Contacts

Lorna Bellamy	07969901001	Tues/Weds/Thurs 9.00 am - 4.00 pm
John Gillett	07909888703	Tues/Thurs 8.30 am - 4.30 pm

## REGULAR STUFF

**Leadership Team** – usually monthly first Tuesday.

Next Meeting – **Tuesday 5<sup>th</sup> October** at 7.30pm

**Church Meeting** – usually bi-monthly third Tuesday.

Next meeting - **Tuesday 16<sup>th</sup> November** at 7.30pm. (At Church).

**Prayer Meeting** – bi-monthly on first Saturday

Next Meeting – **6<sup>th</sup> November @ 10.00am** (At Church)

Prayer are to be held bi-monthly meetings now that we are back at church.

**Next Meeting** is Saturday 6<sup>th</sup> November at 10am.

#### Felixstowe Afternoon Group

Meeting every **1<sup>st</sup> and 3<sup>rd</sup> Wednesday** of the month.

Contact Steve Lineham for more info.

#### Resumption of Face to Face Services



If you would prefer to stand and sing without a mask, please could you sit in the balcony.

### Small Groups

#### Felixstowe Afternoon Group (Margaret Lines/Ingrid Fenn)

Fridays Fortnightly (not currently meeting)  
See opposite for more details.

#### Trimley Evening Group (Andrew Marfleet)

Mondays Fortnightly (not currently meeting)

#### Old Felixstowe Daytime Group (Steve Lineham)

Meeting on the **1<sup>st</sup> and 3<sup>rd</sup> Wednesday** of each month.  
Contact Steve L for details.

#### Felixstowe Morning Group (Brian and Dot Salway)

9.30am @ 9 Treetops

### HARVEST SERVICE

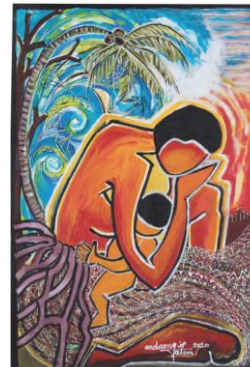
with BMS "I will stand" theme, **26<sup>th</sup> September, 10.30am**

Many thanks to all those who have put together our harvest display today. Our harvest gifts will be going to the residents of Sanctuary Supported Housing, and Access Community Trust. If you have brought gifts for the display this morning there are anti-bacterial wipes available to wipe the items before adding to the display. Thank you for your support, the residents are always very thankful.

### Chair-based Exercise

Chair based exercises resumed on **September 8<sup>th</sup>**, classes will resume at the normal times i.e. Class 1 at 10.00am-11.00am and Class 2 at 11.30am-12.30pm.

Please remember to take a **Lateral Flow Test** before the classes in order to keep everyone safe."



### World Womens' Day of Prayer 2021

*Build a Strong Foundation*  
Prepared by the women of Vanuatu

Friday 1<sup>st</sup> October 2021  
2.30pm

In the Garden of Kirton Methodist Chapel